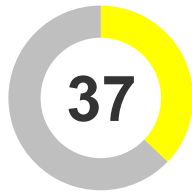


## Economic Scorecard - Quarterly

### Job Growth Performance: Whiteside County, IL



Percentile Rank Among Small Counties  
(100 is Best)

**+0.3%**

Job Growth  
(Q1. 2017 - 2018)



0.1  
pts

Trend  
(vs. Q1. 2017)



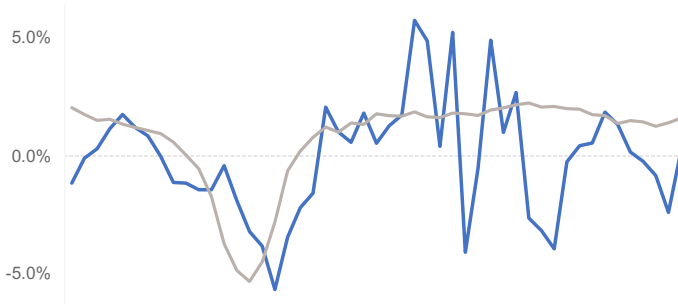
0.2  
pts

Trend  
(vs. 5-Year Avg.)

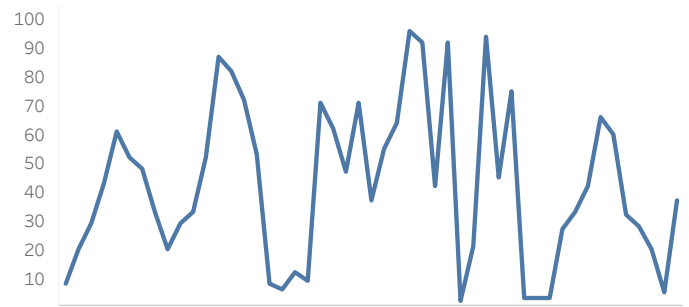
The Whiteside County, IL employment base grew 0.3% over the last 12 months (Q1. 2018). This rate is lower than its 5-year average (0.5%). Compared to other small counties, in the last 12 months, Whiteside County's job growth ranking grew from #371 to #343 out of 548 small counties.

### Job Growth and Ranking Trend WHITESIDE COUNTY, IL

Job Growth (%), 2006 - 2018



Percentile Rank Trend, 2006 - 2018



US % Growth    % Growth

### Top Performing Industries (Growth, 1-Year) WHITESIDE COUNTY, IL

Industry	% Growth	Percentile Rank	Rank	Employment	New Jobs
Total, all industries	0.3%	37	343	20,355	52
Construction	9.0%	77	122	485	40
Manufacturing	8.8%	91	48	3,606	293
Professional and business services	5.0%	70	166	1,647	78
Natural resources and mining	2.1%	50	264	191	4
Leisure and hospitality	0.9%	45	302	1,870	17
Financial activities	-0.6%	43	313	696	-4
Health Services & Priv. Ed.	-0.7%	30	385	2,269	-15
Government	-0.8%	34	360	4,522	-38
Other services	-4.7%	16	457	510	-25